



# CERTIFICATE OF ANALYSIS

ISSUED TO: WEBOTTLE, UNIT G3, INSPIRE BUSINESS PARK, CARROWREAGH ROAD, DUNDONALD, CO DOWN, NORTHERN IRELAND, BT16 1QT



## SAMPLE DETAILS

|                         |                                 |                       |          |
|-------------------------|---------------------------------|-----------------------|----------|
| DATE RECEIVED           | 9-Jun-21                        | PRODUCT NO.           | NC0002   |
| SAMPLE TYPE/DESCRIPTION | Naturecan Grape 50mg/ml (500mg) | BATCH NO              | C0001    |
| ACUTUS SAMPLE NO.       | S05301                          | DATE TESTED STARTED   | 9-Jun-21 |
| PERFORMED BY            | Shireen Everitt                 | DATE TESTING COMPLETE | 9-Jun-21 |

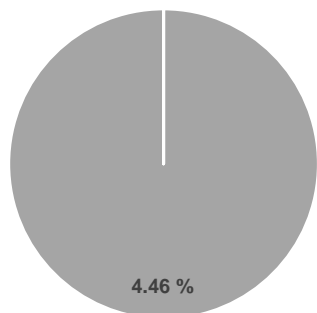
## CERTIFICATE NO: COA-CBD-497 V 1.0

All analyses were performed using the High-Performance Liquid Chromatographic (HPLC) method SOP/LAB/0038 V2.0 and quantification of Cannabinoids carried out using a certified reference standard.

Note: This method is not an ISO standard test method.

## CANNABINOID PROFILE

- CBD-A
- CBG
- CBD
- THC-V
- CBN
- Δ9-THC
- Δ8-THC
- THC-A



| Compound                              | Result (%)   | Result (mg/ml)     |
|---------------------------------------|--------------|--------------------|
| Cannabidiolic acid (CBD-A)            | N.D.         | N.D.               |
| Cannabigerol (CBG)                    | N.D.         | N.D.               |
| Cannabidiol (CBD)                     | 4.46         | 47.97              |
| Tetrahydrocannabivarin (THC-V)        | N.D.         | N.D.               |
| Cannabinol (CBN)                      | N.D.         | N.D.               |
| Delta-9-Tetrahydrocannabinol (Δ9-THC) | N.D.         | N.D.               |
| Delta-8-Tetrahydrocannabinol (Δ8-THC) | N.D.         | N.D.               |
| Tetrahydrocannabinolic acid (THC-A)   | N.D.         | N.D.               |
| <b>Total Cannabinoids</b>             | <b>4.46%</b> | <b>47.97 mg/ml</b> |
| Total Potential THC**                 | 0.00%        | 0 mg/ml            |
| Total Potential CBD**                 | 4.46%        | 47.97 mg/ml        |

LOQ = 0.2 µg/ml

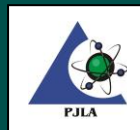
N.D. = Not Detected

% = % (w/w) = Percent (Weight of Analyte / Weight of Product)

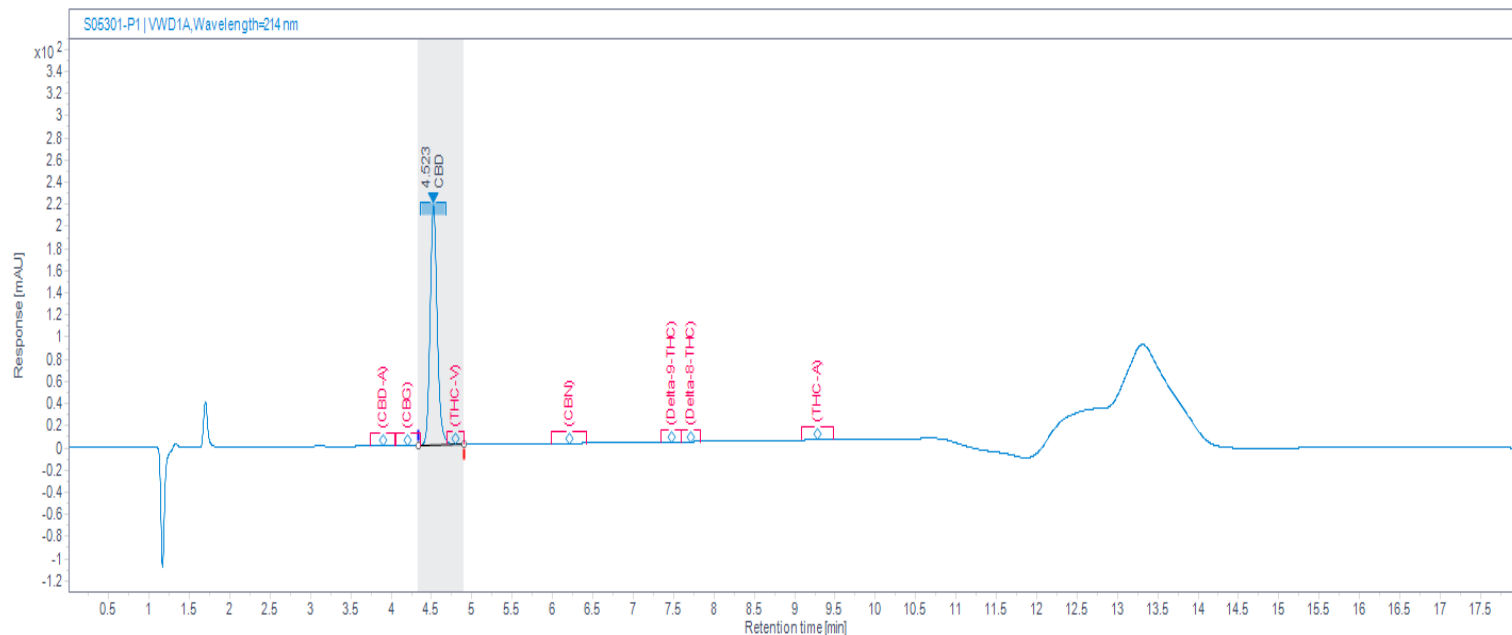
\* Total Cannabinoids result reflects the absolute sum of all cannabinoids detected

\*\* Total Potential THC/CBD is calculated using the following formulas to take into account the loss of carbonyl group during decarboxylation step

Total THC = Δ9-THC + (THC-A \* (0.877)) and Total CBD = CBD + (CBD-A \* (0.877))



## HPLC CHROMATOGRAM



## ADDITIONAL NOTES

Sampling is excluded and is the responsibility of the supplier.

\*All results reported in this certificate only relate to the sample and batch tested.

Method and measurement uncertainty available upon request.

AUTHORISED BY:

Shireen Everitt

SIGNATURE:

DATE:

10-Jun-21

Signed by: S-1-12-1-2299596759-1105525858-402682035-3513694014/3bd31e99-5648-4abf-a51e-3aa049736e9c